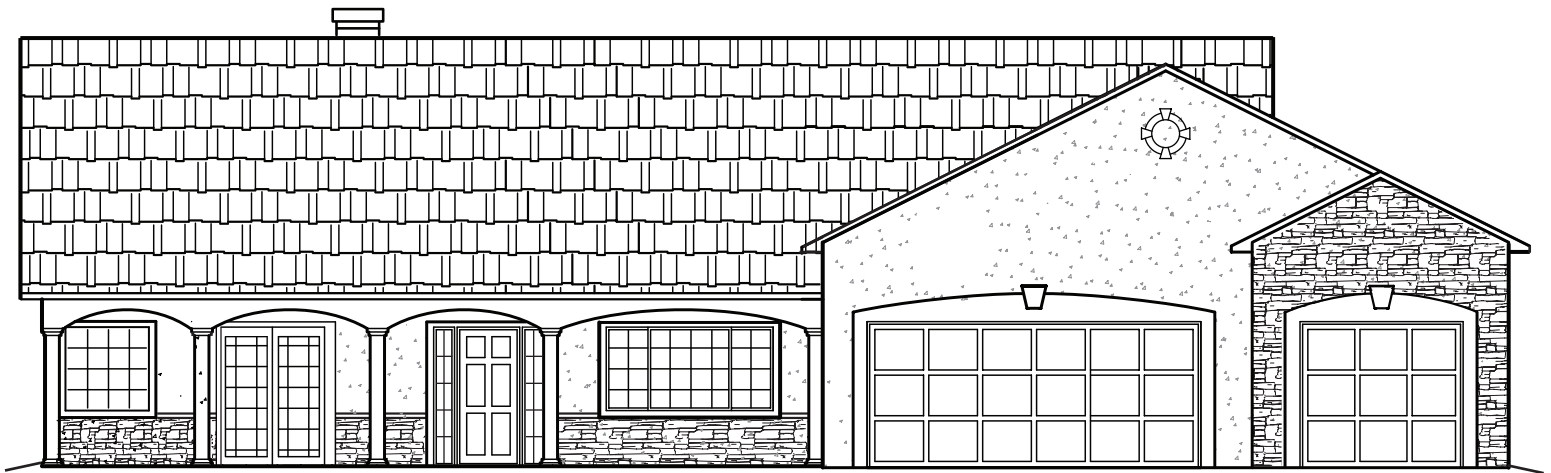


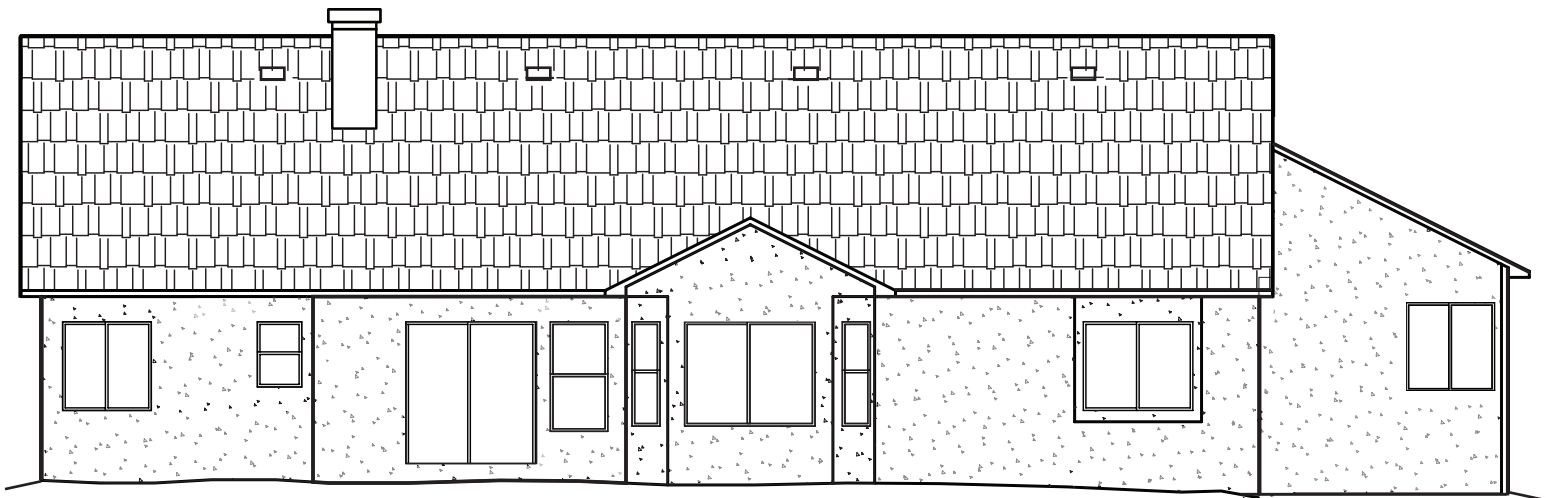
The Tarah

BY MAJESTIC CUSTOM HOMES



FRONT

Standard 4-Car Garage
(Additional Garage Bays Optional)



BACK

Main Level = 2,099 sq. ft.

Basement = 2,079 sq. ft.

Total = 4,178

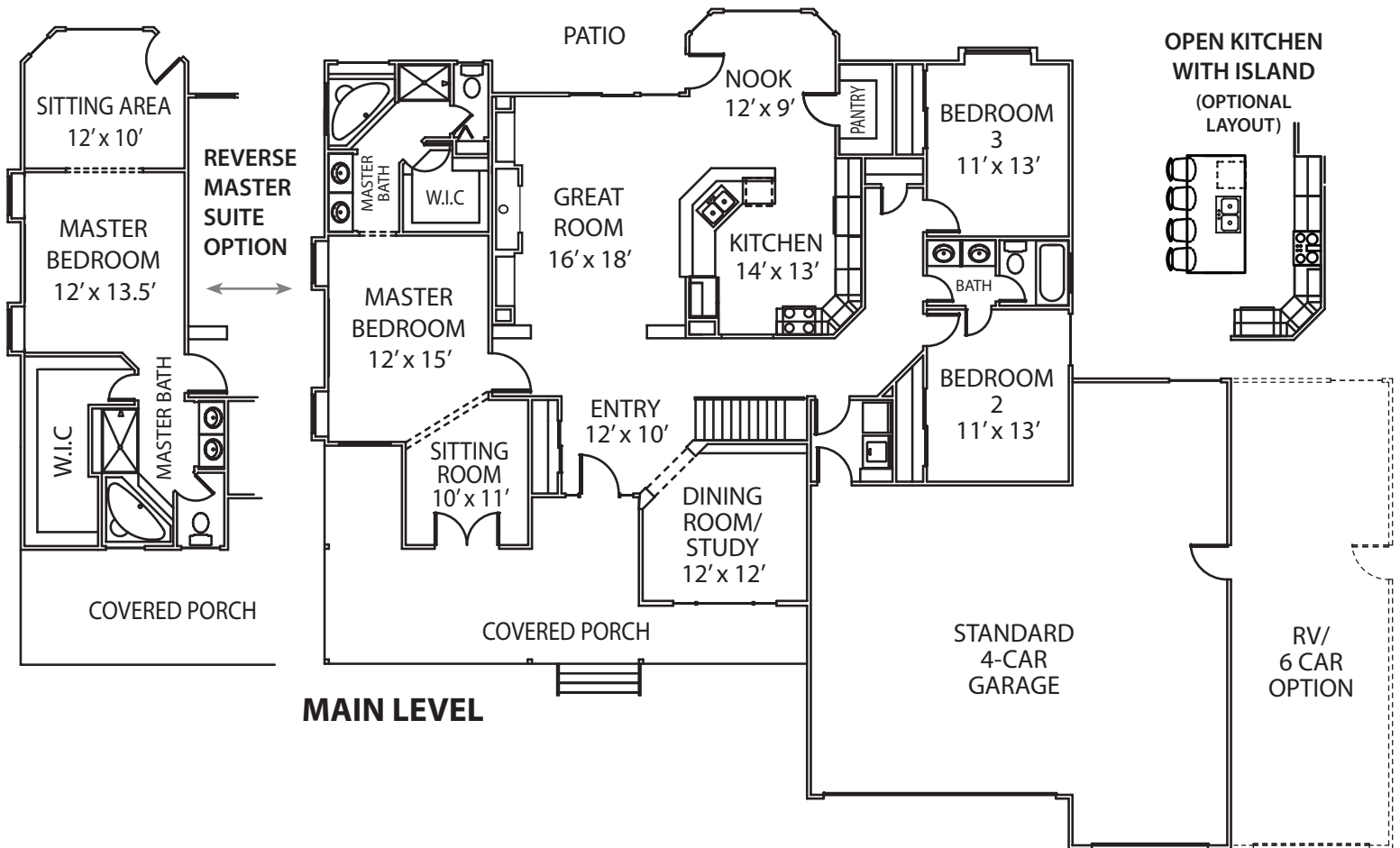
Large, open ranch plan with 3 bedrooms, 2 baths, formal dining or study, open kitchen with nook, and many optional features. Basement finish adds 2 or more bedrooms, 1 bathroom, family room and other options as requested.

For more information call 719.492.0685

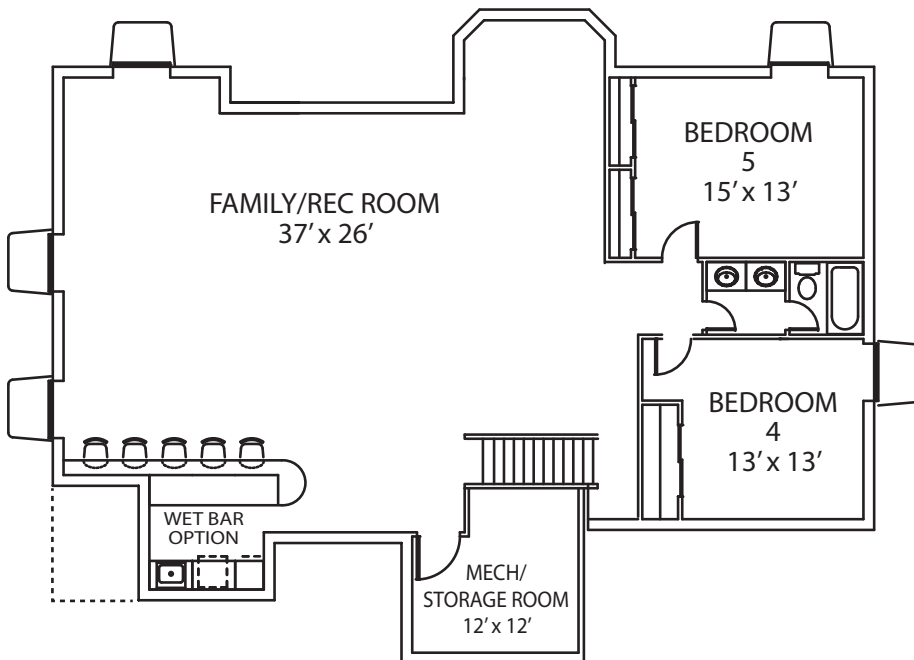
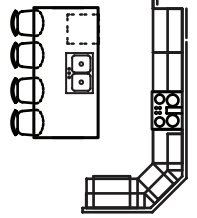
Majestic
custom homes, inc

The Tarah

BY MAJESTIC CUSTOM HOMES



OPEN KITCHEN WITH ISLAND
(OPTIONAL LAYOUT)



Main Level = 2,099 sq. ft.
Basement = 2,079 sq. ft.
Total = 4,178

Large, open ranch plan with 3 bedrooms, 2 baths, formal dining or study, open kitchen with nook, and many optional features. Basement finish adds 2 or more bedrooms, 1 bathroom, family room and other options as requested.

For more information call 719.492.0685

Majestic
custom homes, inc

© Majestic Custom Homes, Inc. All rights reserved. Plan changes and options may result in additional charges at builder's discretion. All references to square footage are approximate. Plans, pricing and features subject to change without notice or obligation.

BASEMENT LEVEL
(Basement layout changes with reverse master)

*Basement finish not included in base pricing.