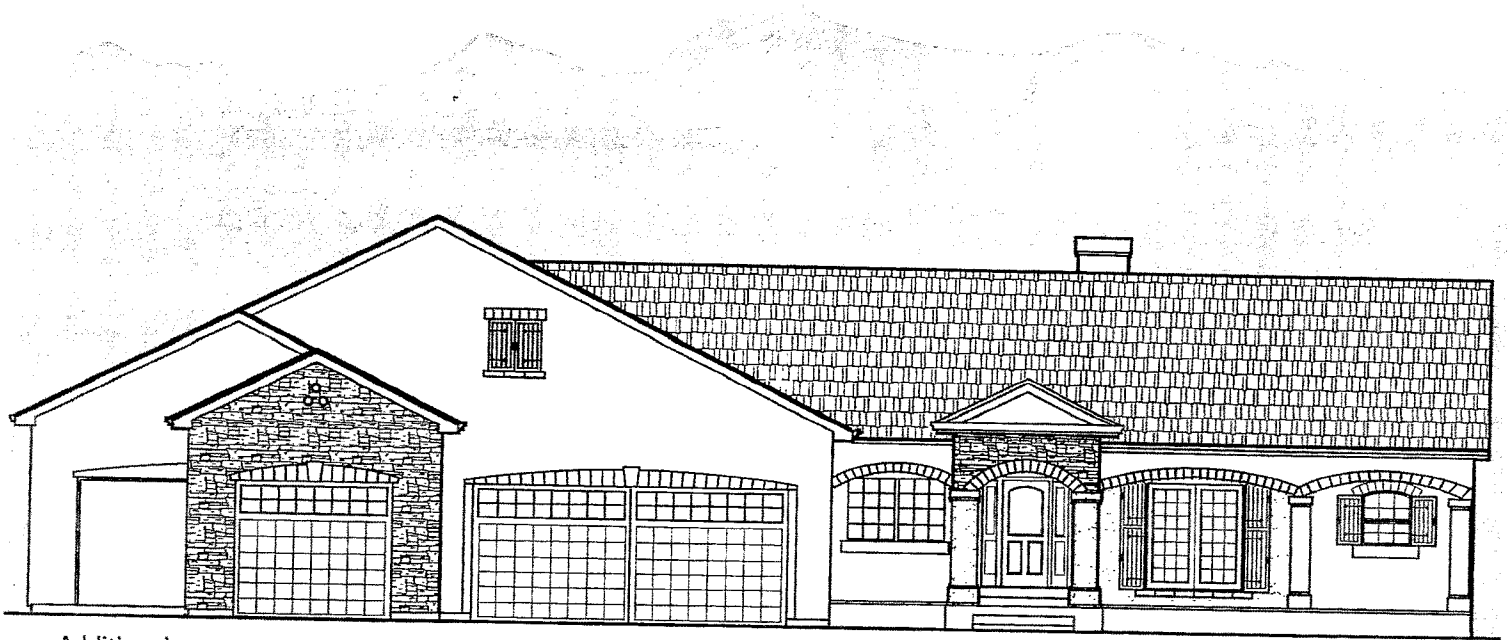


The Jordi

BY MAJESTIC CUSTOM HOMES



Additional
Garage Bays
Optional

Standard
4-Car Garage

Main Level = 2,507 sq. ft.

Basement = 2,507 sq. ft.

Total = 5,014 sq. ft.

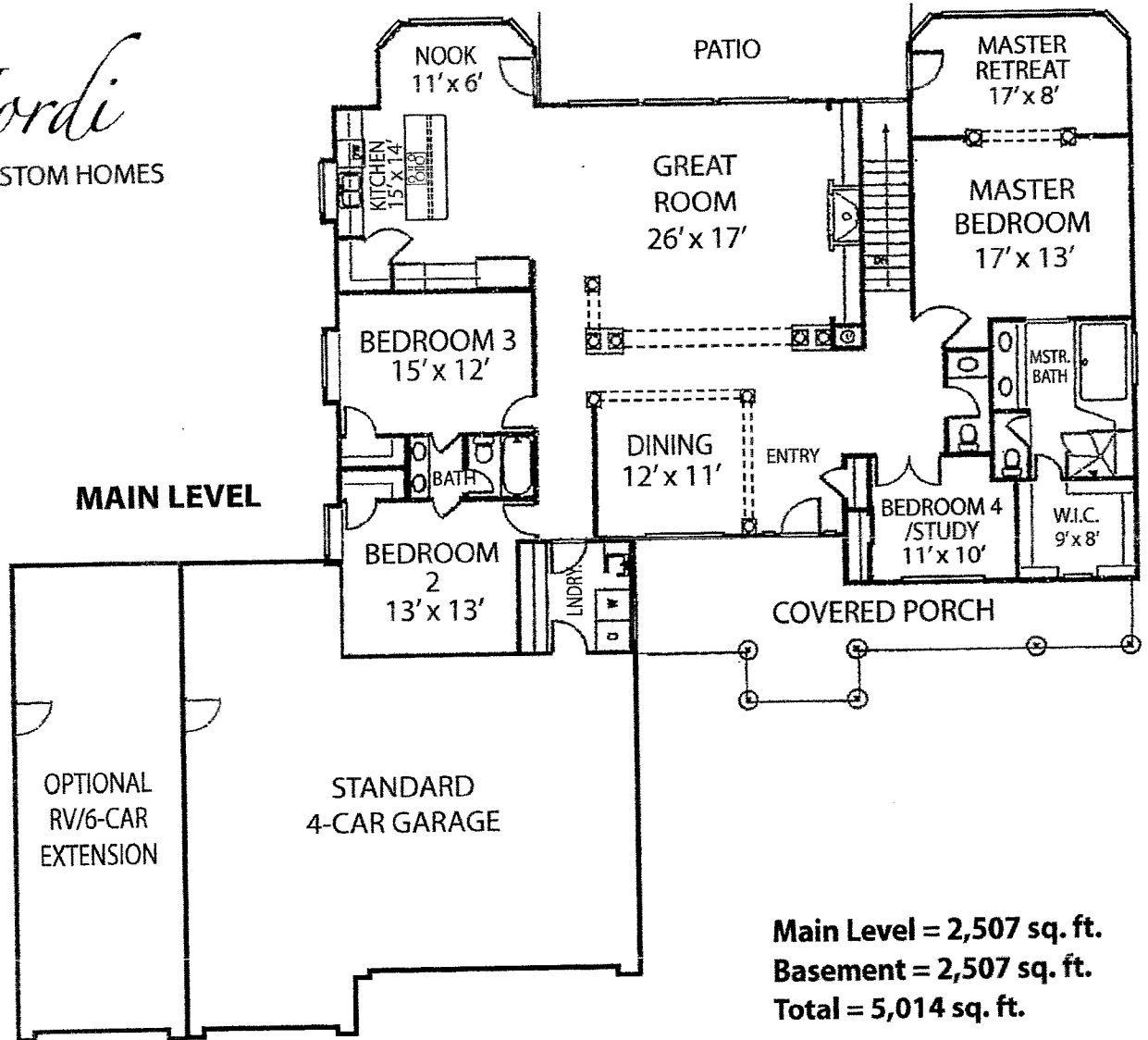
Big, beautiful ranch plan with 4 bedrooms or 3 bedrooms + study upstairs, 2.5 baths, large master with retreat, open kitchen, formal dining room and nook, fireplace and more. Basement finish adds 2 large bedrooms, 1 bathroom, family/rec room, and other options as requested.

For more information call 719.492.0685

Majestic
custom homes, inc

The Jordi

BY MAJESTIC CUSTOM HOMES



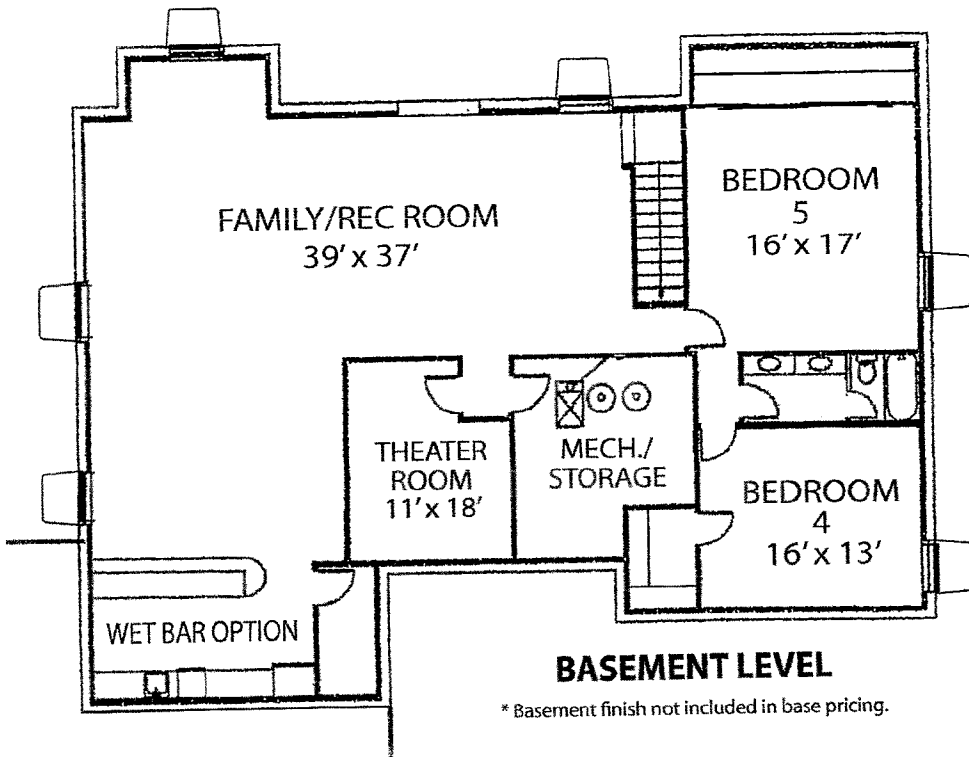
Main Level = 2,507 sq. ft.
Basement = 2,507 sq. ft.
Total = 5,014 sq. ft.

Big, beautiful ranch plan with 4 bedrooms or 3 bedrooms + study upstairs, 2.5 baths, large master with retreat, open kitchen, formal dining room and nook, fireplace and more. Basement finish adds 2 large bedrooms, 1 bathroom, family/rec room, and other options as requested.

For more information call 719.492.0685

Majestic
 custom homes, inc

© Majestic Custom Homes, Inc. All rights reserved. Plan changes and options may result in additional charges at builder's discretion. All references to square footage are approximate. Plans, pricing and features subject to change without notice or obligation.



* Basement finish not included in base pricing.