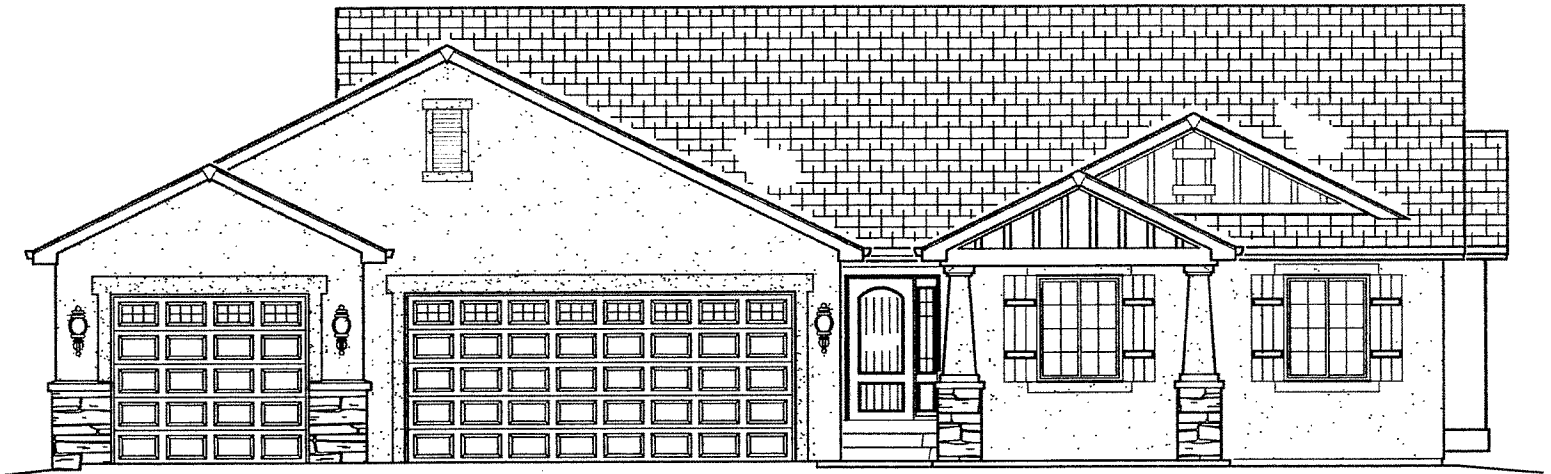


# The Kaden

BY MAJESTIC CUSTOM HOMES



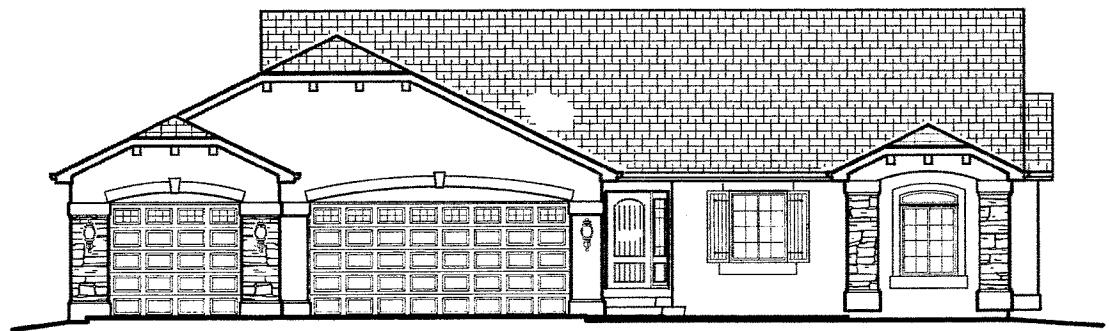
Shown with Standard 4-Car Garage

\*Additional Garage Bays Optional

ELEVATION A



ELEVATION B



ELEVATION C

**Main Level = 1,812 sq. ft. • Basement = 1,719 sq. ft.**

**Total = 3,531**

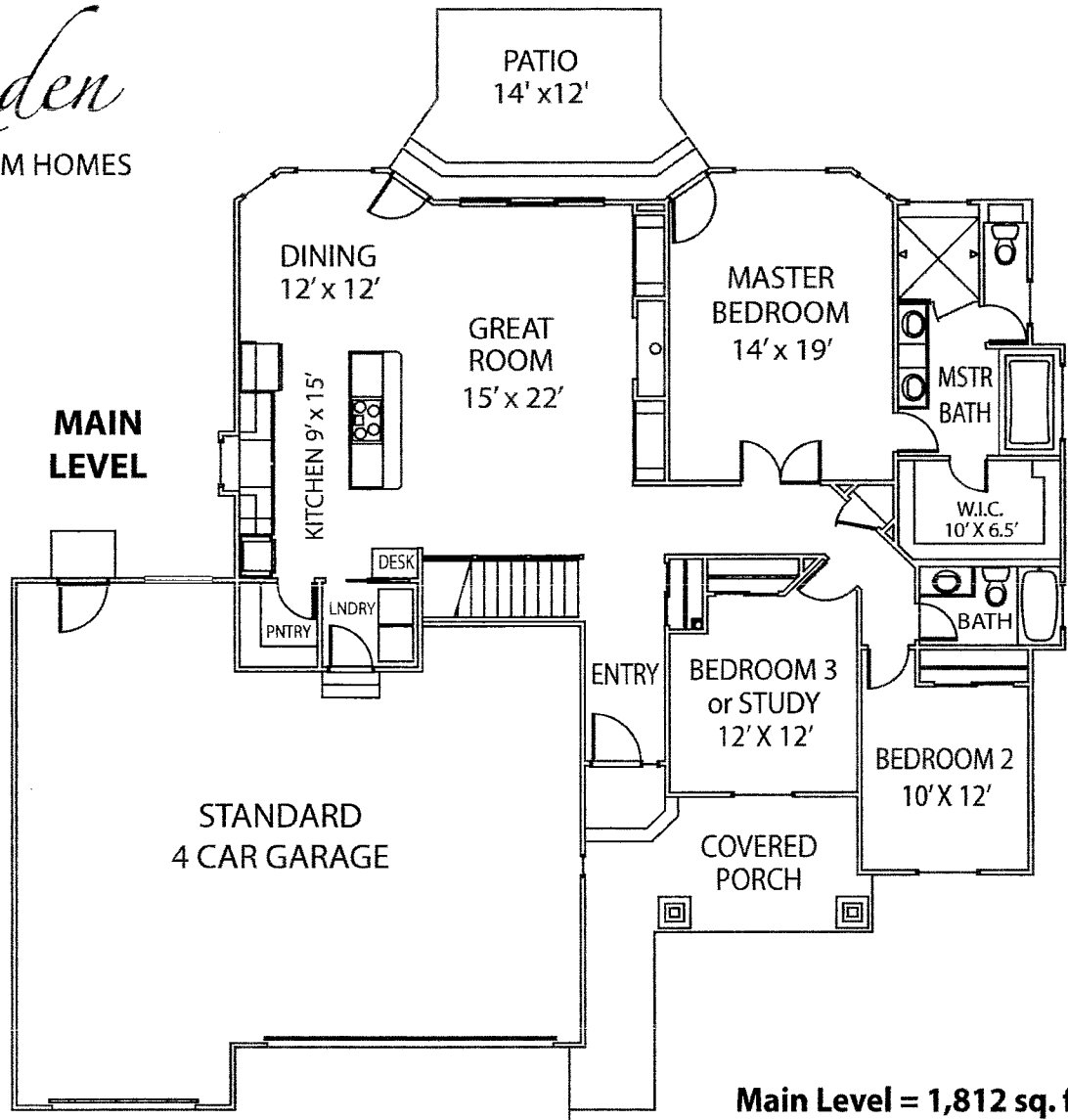
Contemporary ranch plan with 2-3 bedrooms upstairs and study option, 2 baths, spacious dining area, covered front porch, large master suite, and many other optional features. Basement finish adds 2 bedrooms, 1 bathroom, family room and other options as requested.

**For more information call 719.492.0685**

**Majestic**  
custom homes, inc

# The Kaden

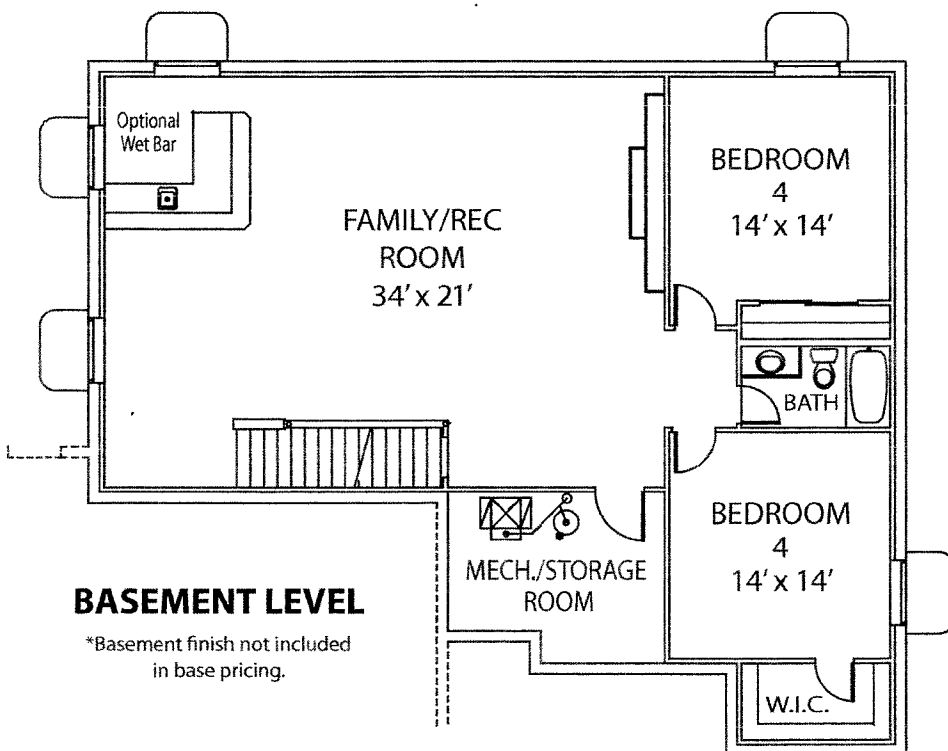
BY MAJESTIC CUSTOM HOMES



**Main Level = 1,812 sq. ft.**  
**Basement = 1,719 sq. ft.**  
**Total = 3,531**

Contemporary ranch plan with 2-3 bedrooms upstairs and study option, 2 baths, spacious dining area, covered front porch, large master suite, and many other optional features. Basement finish adds 2 bedrooms, 1 bathroom, family room and other options as requested.

For more information call 719.492.0685



\*Basement finish not included in base pricing.

**Majestic**  
 custom homes, inc

© Majestic Custom Homes, Inc. All rights reserved. Plan changes and options may result in additional charges at builder's discretion. All references to square footage are approximate. Plans, pricing and features subject to change without notice or obligation.