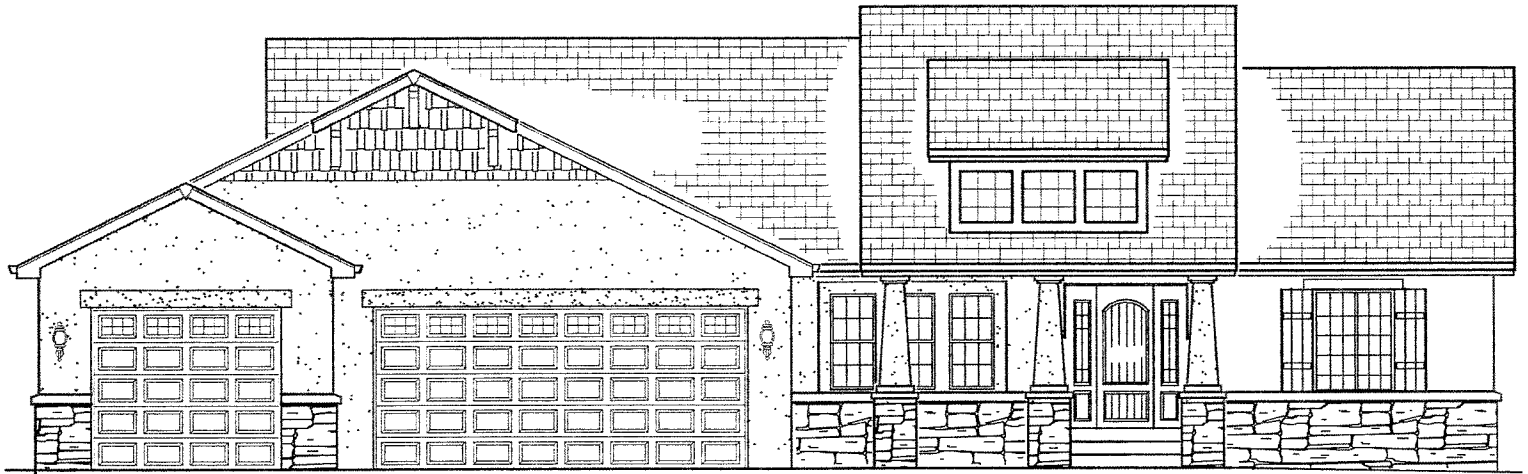


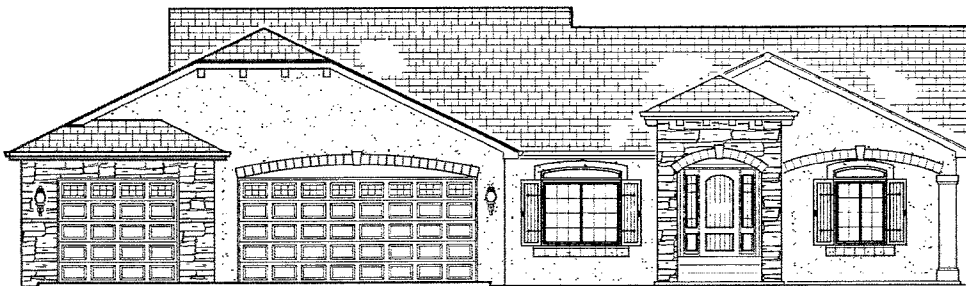
The Oasis BY MAJESTIC CUSTOM HOMES



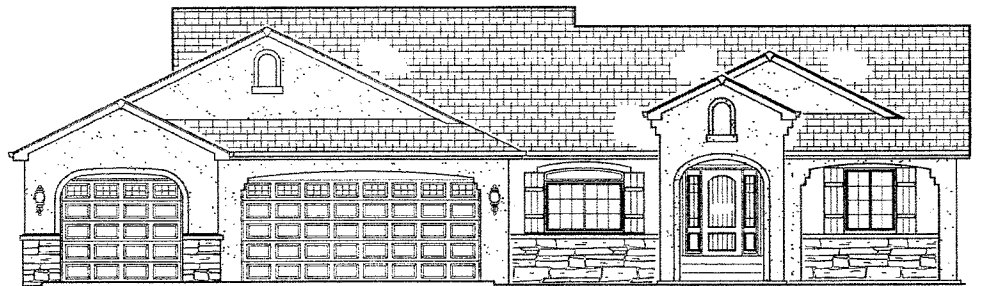
Shown with Standard 4-Car Garage

*Additional Garage Bays Optional

ELEVATION A



ELEVATION B



ELEVATION C

Main Level = 1,942 sq. ft. • Basement = 1,942 sq. ft.

Total = 3,884

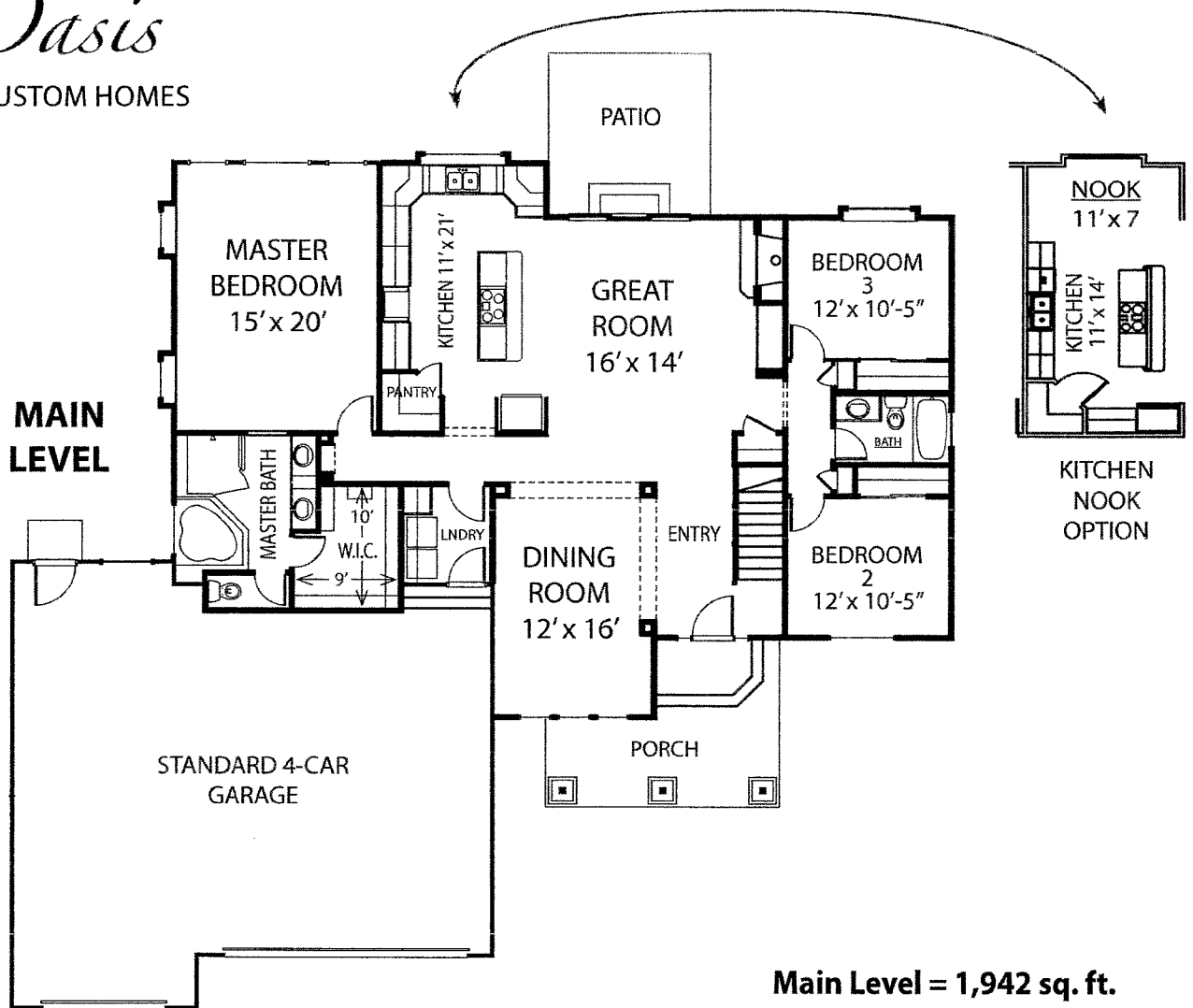
Beautiful ranch plan with 3 bedrooms, 2 baths, formal dining or study, open kitchen with nook option, and many other optional features. Basement finish adds 2 or more bedrooms, 1 bathroom, family room and other options as requested. Your choice of three different front elevations.

For more information call 719.492.0685

Majestic
custom homes, inc

The Oasis

BY MAJESTIC CUSTOM HOMES



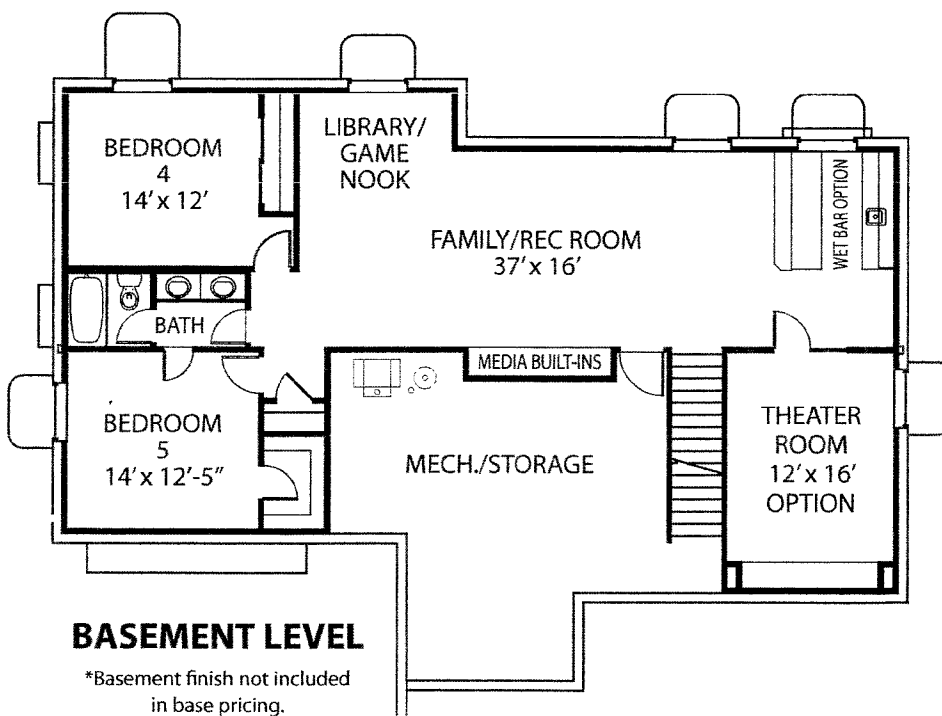
Main Level = 1,942 sq. ft.

Basement = 1,942 sq. ft.

Total = 3,884

Beautiful ranch plan with 3 bedrooms, 2 baths, formal dining or study, open kitchen with nook option, and many other optional features. Basement finish adds 2 or more bedrooms, 1 bathroom, family room and other options as requested. Your choice of three different front elevations.

**For more information call
719.492.0685**



*Basement finish not included in base pricing.

Majestic
custom homes, inc

© Majestic Custom Homes, Inc. All rights reserved. Plan changes and options may result in additional charges at builder's discretion. All references to square footage are approximate. Plans, pricing and features subject to change without notice or obligation.