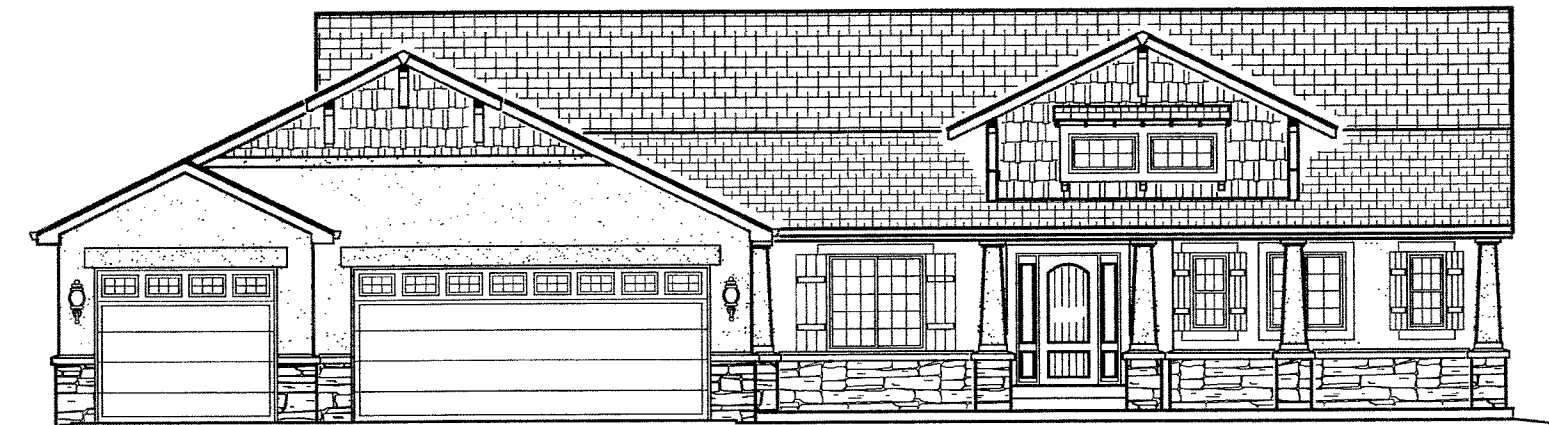


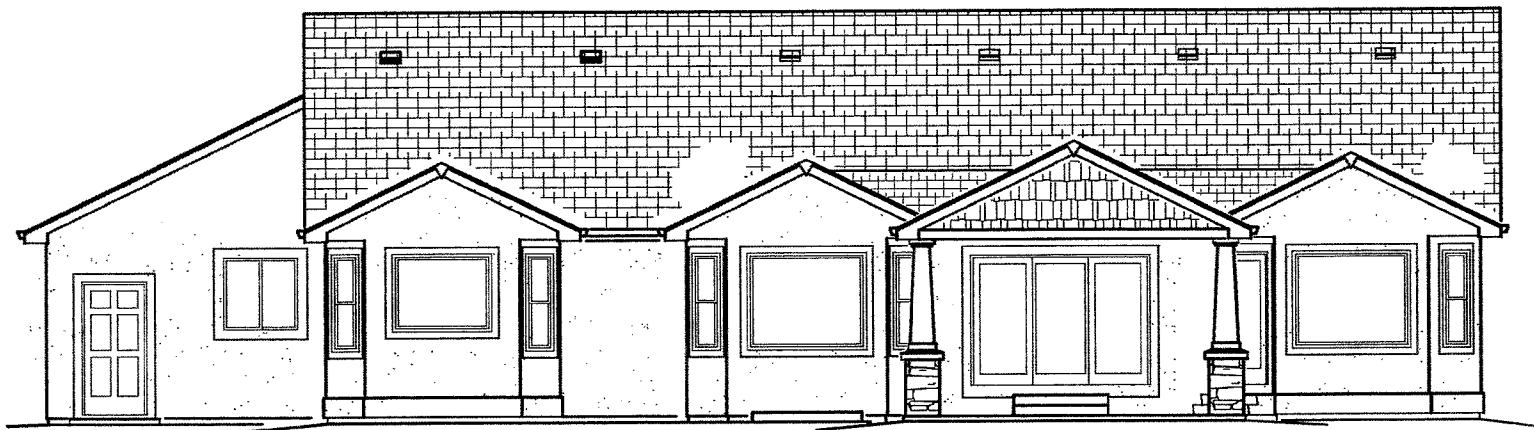
The Tarah Deluxe

BY MAJESTIC CUSTOM HOMES



Standard 4-Car Garage
(Additional Garage Bays Optional)

FRONT



(Patio Cover Optional)

BACK

Main Level = 2,238 sq. ft.

Basement = 2,132 sq. ft.

Total = 4,370

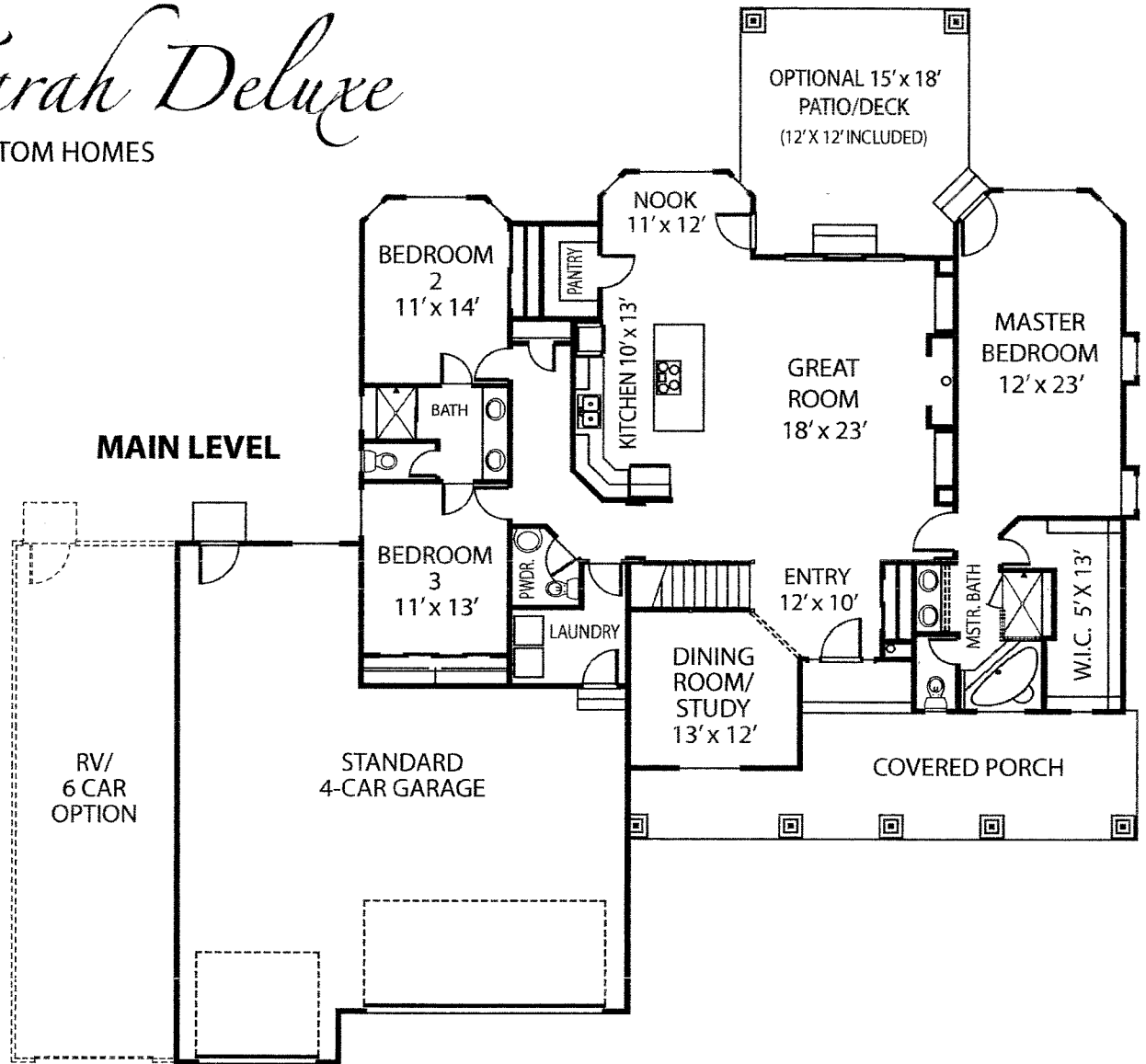
Large, open ranch plan with 3 bedrooms, 2.5 baths, formal dining or study, open kitchen with nook, and many optional features. Basement finish adds 2 bedrooms, 1 bathroom, family room and other options as requested.

For more information call 719.492.0685

Majestic
custom homes, inc

The Tarah Deluxe

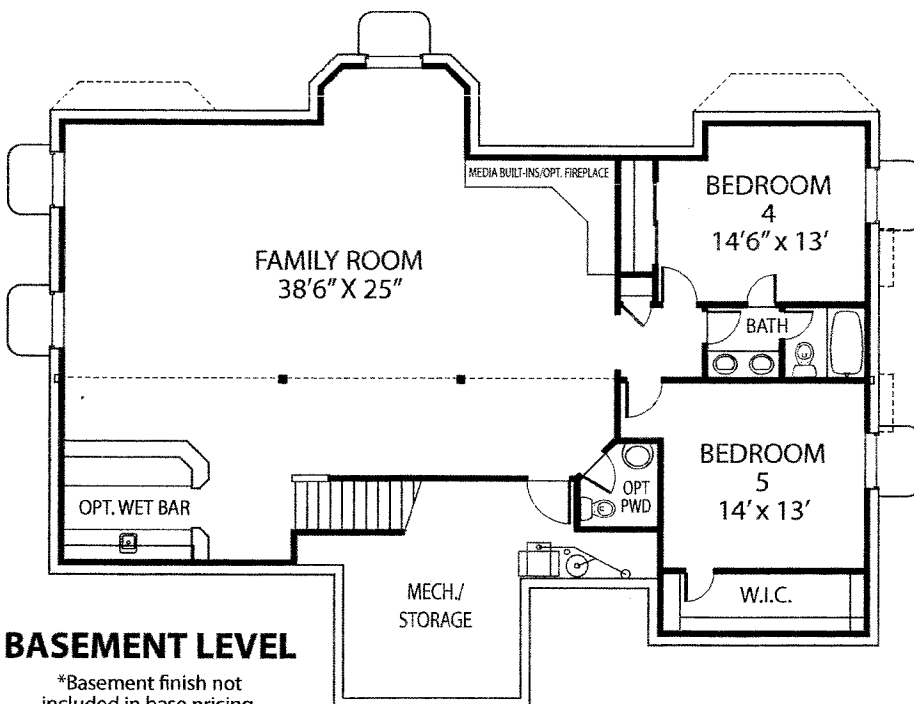
BY MAJESTIC CUSTOM HOMES



Main Level = 2,238 sq. ft.
Basement = 2,132 sq. ft.
Total = 4,370

Large, open ranch plan with 3 bedrooms, 2.5 baths, formal dining or study, open kitchen with nook, and many optional features. Basement finish adds 2 bedrooms, 1 bathroom, family room and other options as requested.

For more information call 719.492.0685



BASEMENT LEVEL

*Basement finish not included in base pricing.



© Majestic Custom Homes, Inc. All rights reserved. Plan changes and options may result in additional charges at builder's discretion. All references to square footage are approximate. Plans, pricing and features subject to change without notice or obligation.