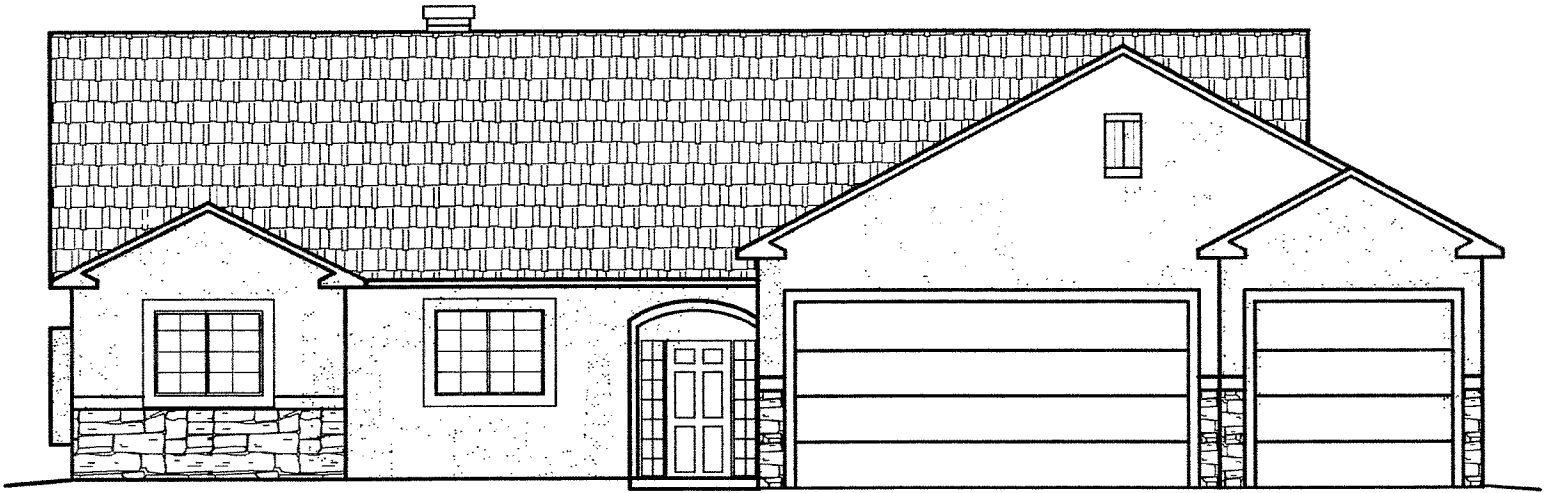


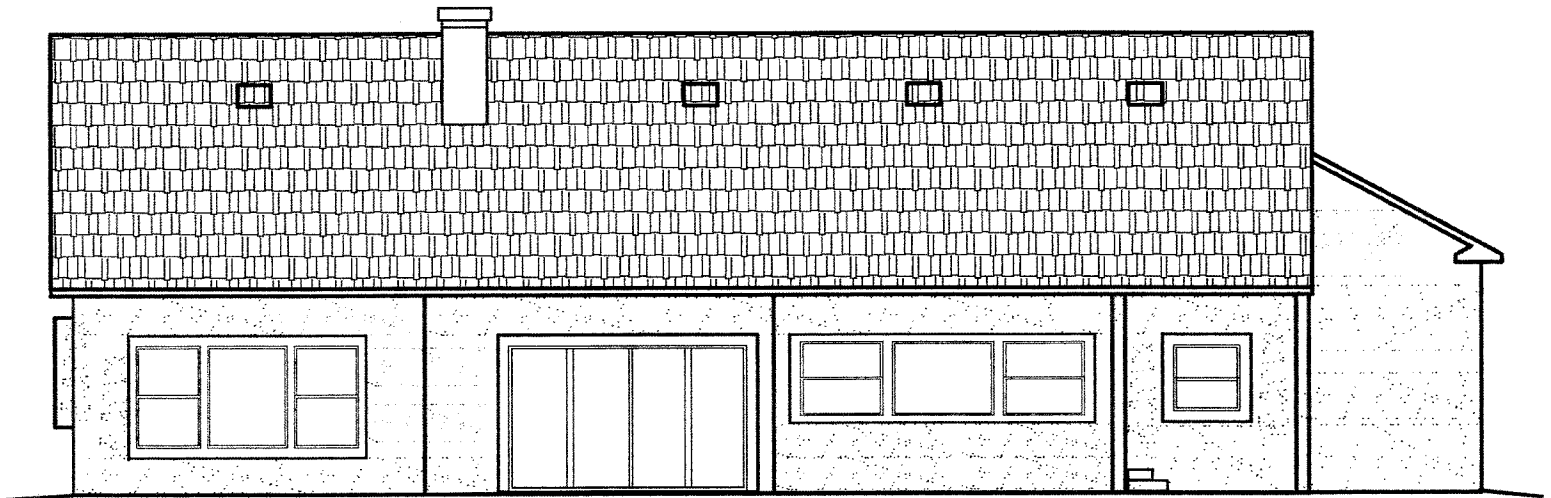
The Villa

BY MAJESTIC CUSTOM HOMES



FRONT

Standard 4-Car Garage
(Additional Garage Bays Optional)



BACK

Main Level = 1,890 sq. ft.

Basement = 1,890 sq. ft.

Total = 3,780

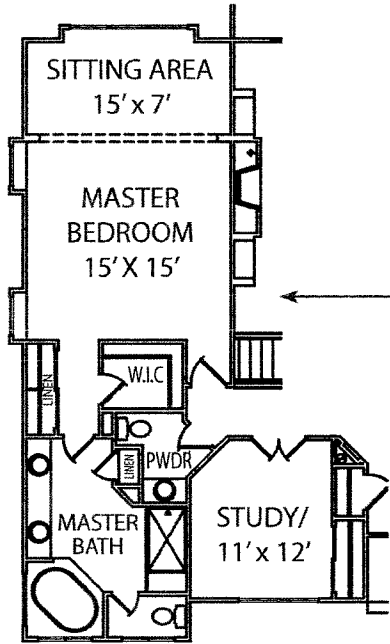
Flexible ranch plan with 2-3 bedrooms upstairs and study option, 2 baths, spacious dining nook, option for covered front porch, side porch or flex room, and many other optional features. Basement finish adds 2 bedrooms, 1 bathroom, family room and other options as requested.

For more information call 719.492.0685

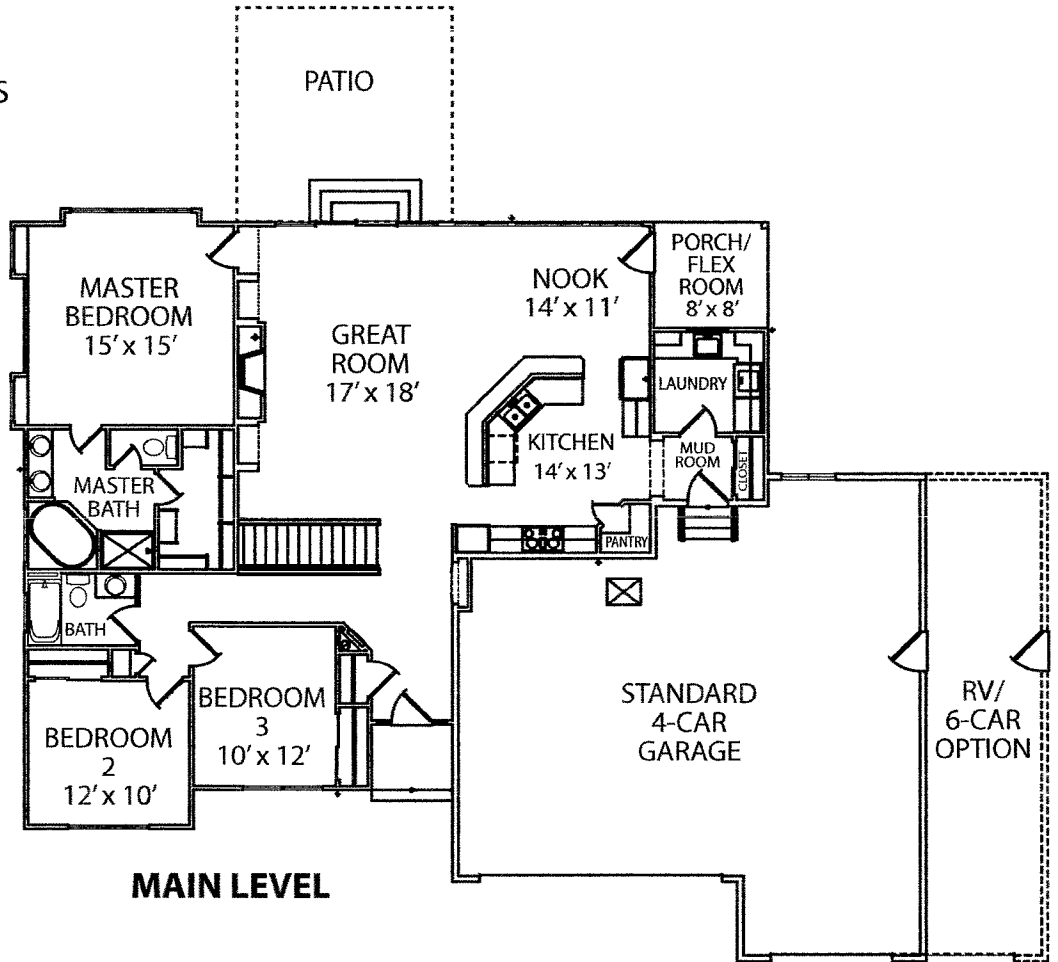
Majestic
custom homes, inc

The Villa

BY MAJESTIC CUSTOM HOMES



OPTIONAL MASTER SUITE



MAIN LEVEL

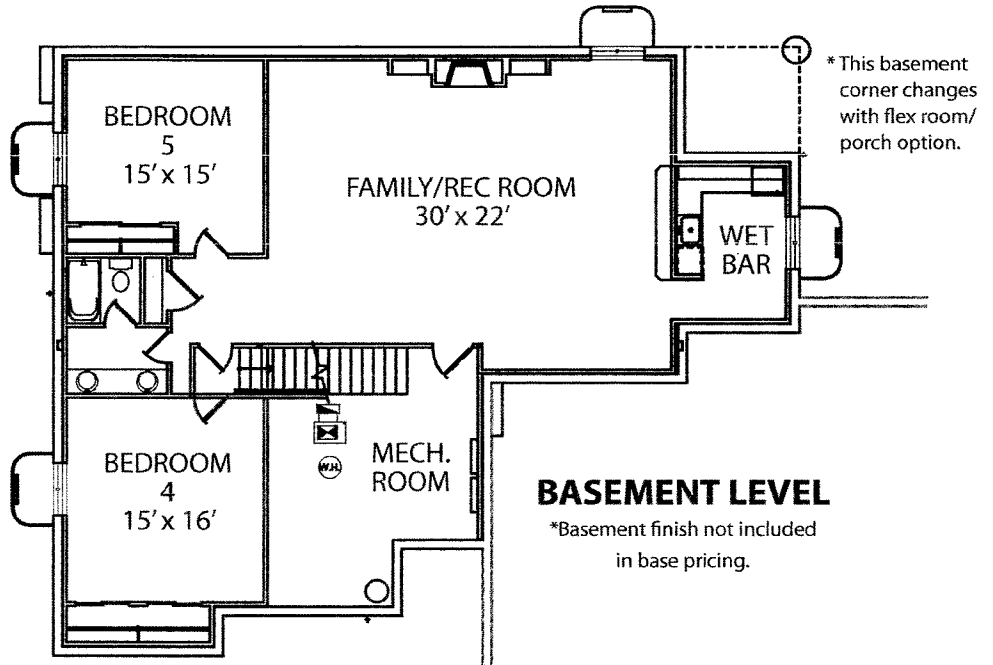
Main Level = 1,890 sq. ft.

Basement = 1,890 sq. ft.

Total = 3,780

Flexible ranch plan with 2-3 bedrooms upstairs and study option, 2 baths, spacious dining nook, option for covered front porch, side porch or flex room, and many other optional features. Basement finish adds 2 bedrooms, 1 bathroom, family room and other options as requested.

For more information call 719.492.0685



BASEMENT LEVEL

*Basement finish not included in base pricing.

* This basement corner changes with flex room/porch option.

Majestic
custom homes, inc

© Majestic Custom Homes, Inc. All rights reserved. Plan changes and options may result in additional charges at builder's discretion. All references to square footage are approximate. Plans, pricing and features subject to change without notice or obligation.